

AN INTRODUCTION TO



SAMRAT FORGINGS
LIMITED

OVERVIEW



FORGING DIVISION



**MACHINING COMPONENT
DIVISION**



CRANKSHAFT MACHINING

OVERVIEW



FORGING DIVISION



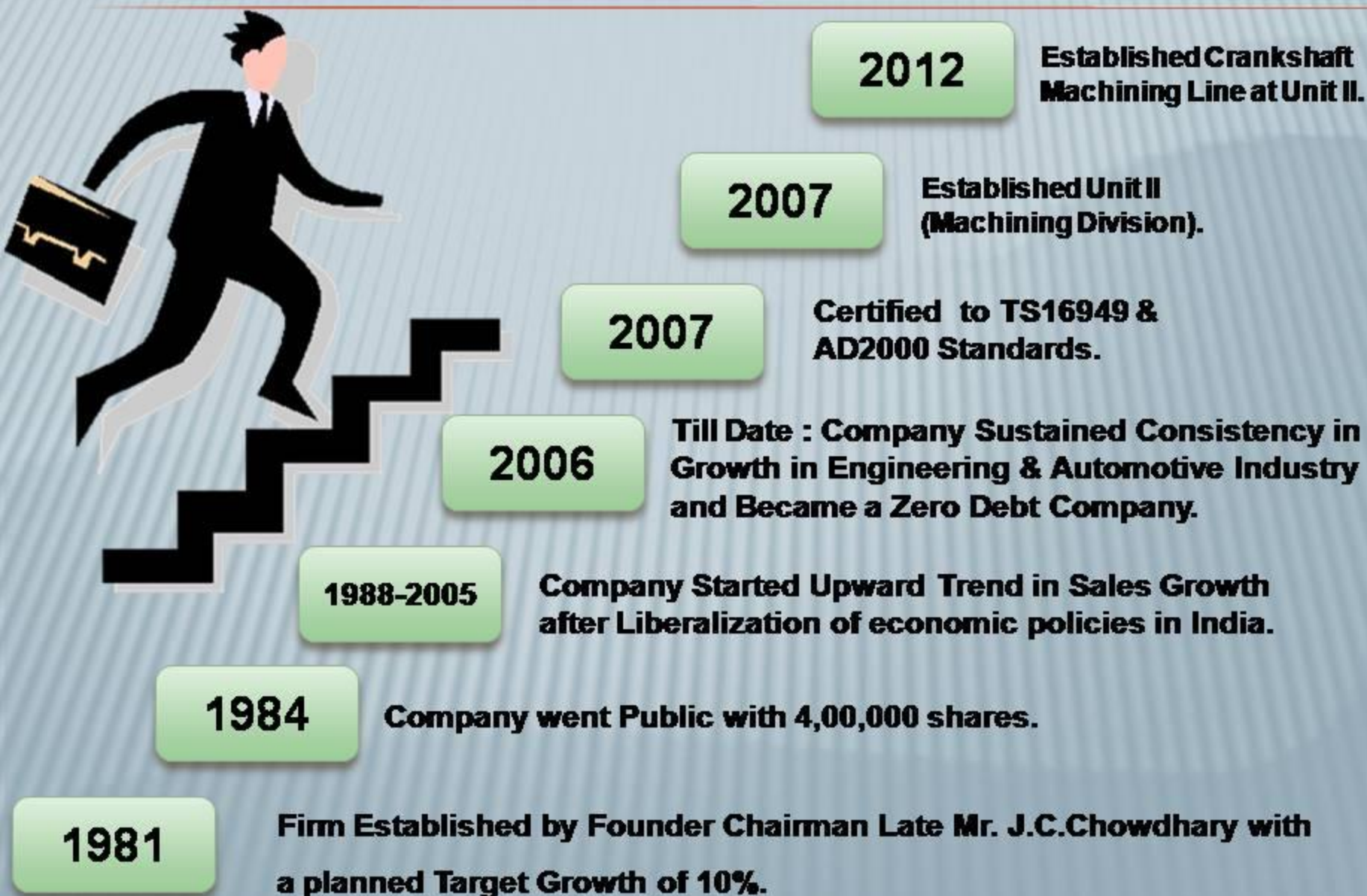
OVERVIEW



MACHINING DIVISION



FOUNDATION AND GROWTH STORY



VISION



To be a Most Preferred & Reliable Supplier for Automotive & Non-Automotive Forged & Machined Products at competitive pricing for :

Farm Equipment



Automobile



Earthmoving & Construction Equipment



Oil & Energy



Railways & Allied Industries



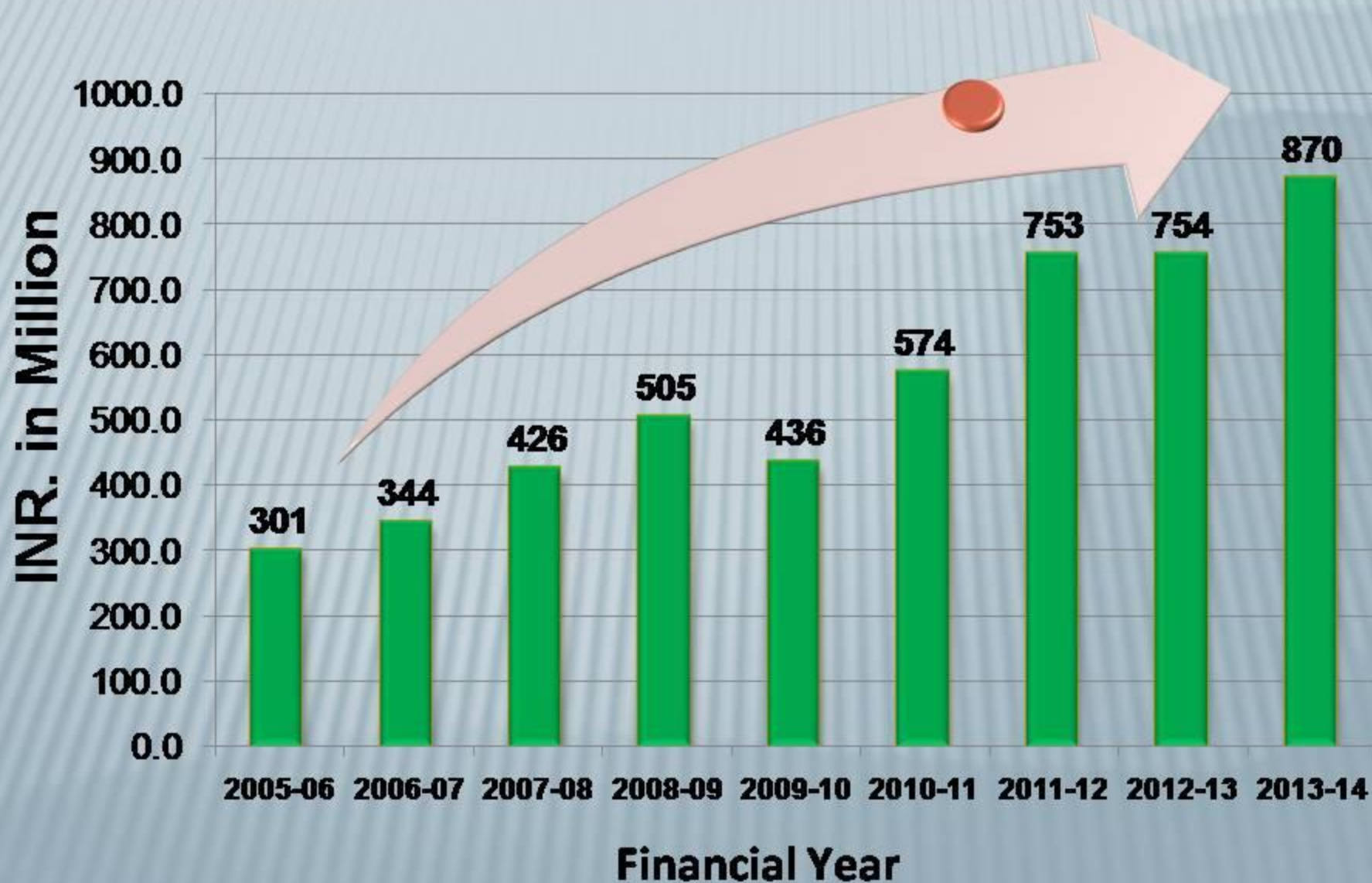
MISSION



Samrat Forgings aims to achieve the consistent growth with a vision of 100% customer satisfaction , On time deliveries by supplying defect free quality products.

We believes in employee participation & trainings and take extra care of environment & health safety of our employees.

SALES



MANUFACTURING LOCATIONS



SAMRAT FORGINGS LIMITED
(FORGING & MACHINING DIVISION)
S.A.S. NAGAR MOHALI, PUNJAB
INDIA

Strategically located on National Highway in Northern India

OUR MAJOR INDIAN CUSTOMERS



OUR MAJOR OVERSEAS CUSTOMERS



INTERNATIONAL CUSTOMER BASE



CUSTOMER BASE IN INDIA



PROCESS DESIGN

CAD/CAM

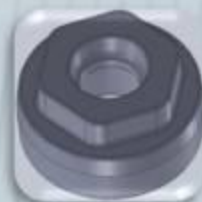
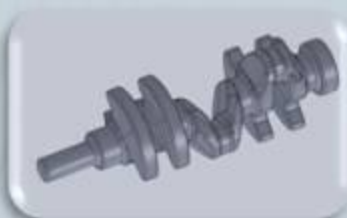
- Solid Works



- Autocad

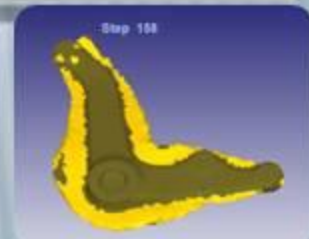
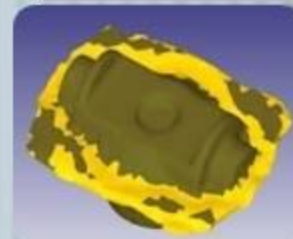


- Work NC



SIMULATION

- Deform – 3D



Benifits:

- 3D simulation of Forging Process.
- Optimizing the Forging Process.
- Better Utilisation of the Forging Equipment and Material.
- Reduced Engineering and Financial risks.

FORGING RANGE

- ✗ **OUR VAST PRODUCT RANGE CONSISTS OF MORE THAN 1200 COMPONENTS OF VARIOUS SHAPES AND PROFILES.**

PROFILE

**CRANK SHAFTS
CAM SHAFTS
STUB AXLES
STEERING ARMS
TRACK LINKS
TRANSMISSION SHAFTS**

ROUND

**BULL GEARS
CROWN WHEELS
TRANSMISSION GEARS
FLANGES
BOSSES
COVERS
TRACK ROLLERS**

+ WEIGHT RANGE FEASIBLE : 4.0 ~ 100 KGS.

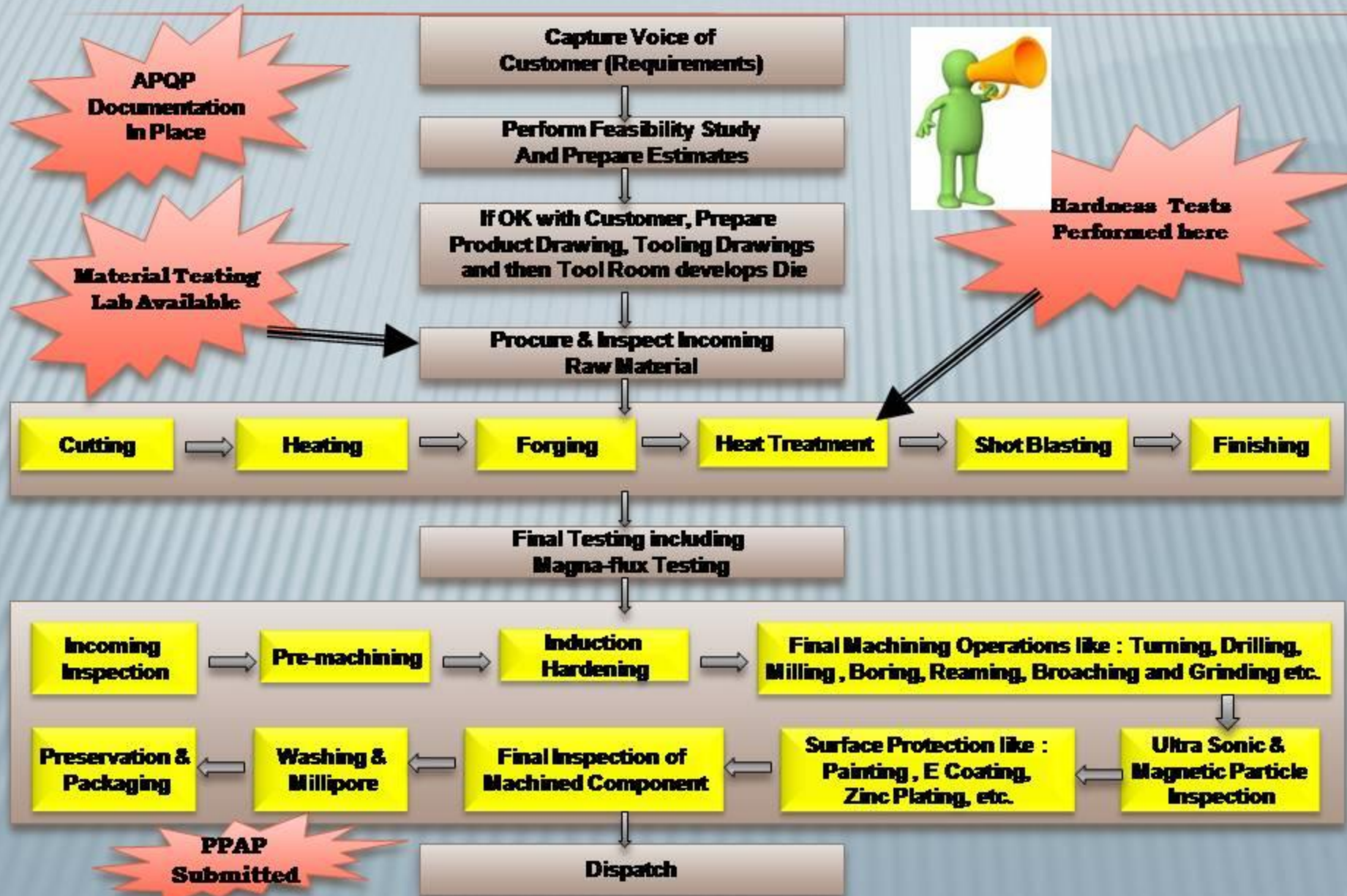
+ DIMENSIONAL RANGE FEASIBLE :

✗ MAXIMUM DIAMETER : 480 MM.

✗ MAXIMUM LENGTH : 700 MM.

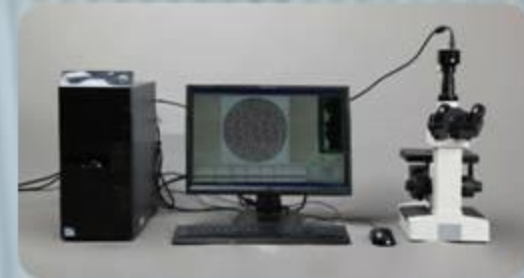


NEW PRODUCT DEVELOPMENT PROCESS



RAW MATERIAL & PRODUCT TESTING FACILITIES

- **Mobile Spectro Scope**
- **Computerized Brinell Hardness Tester**
- **Computerized Rockwell Hardness Tester**
- **Computerized Universal Testing Machine**
- **Computerized Impact Testing Machine**
- **Microscope with Image Analyzer**
- **Jominy Testing Facilities**
- **Ultrasonic Crack Detector**
- **Magnaflux Crack Detection Machine**
- **Well Equipped Wet Laboratory for Material Testing**



TOOL ROOM

- ✗ **VERTICAL MILLING CENTER - MAKINO- 1 Nos.**
- ✗ **VERTICAL MILLING CENTER - DOOSAN- 2 Nos.**
- ✗ **ELECTRO-DISCHARGE MACHINE (EDM) – 3 Nos.**
- ✗ **3 D COPY-MILLING MACHINES – 2 Nos.**
- ✗ **VERTICAL MILLING MACHINE – 1 Nos.**
- ✗ **VERTICAL TURRET LATHE – 1 Nos.**
- ✗ **PLANO MILLING MACHINE – 1 Nos.**
- ✗ **MILLING MACHINES - 2 Nos.**
- ✗ **CONVENTIONAL LATHES – 5 Nos.**
- ✗ **RADIAL DRILL MACHINES - 1 Nos.**
- ✗ **DRILLING MACHINES - 1 Nos.**
- ✗ **SHAPER MACHINE – 1 Nos.**
- ✗ **D C WELDING SET - 1 Nos.**



FORGING INFRASTRUCTURE

- **Pneumatic Hammers :**
 - MPM 5.0 Ton**
 - MPM 2.5 Ton**
 - MPM 1.25 Ton**
- **Friction Belt Drop Hammers**
 - 2 Ton – 2 Nos**
 - 1.5 Ton – 1 Nos.**
- **Forging Screw Press 400 Ton – 1 Nos.**
- **Trimming Presses 150, 250, 300, 400 and 500 Ton
(One each with all Hammers and Screw Presses)**
- **Induction Furnace from Inductotherm – 2 Nos**
- **Oil Fired Pusher Furnace – 5 Nos**
- **Slot Furnace – 2 Nos**



HEAT TREATMENT INFRASTRUCTURE



- Automated Continuous Oil Fired Pusher Type Furnaces.
- Overall Capacity : 30 Tons/Day
- Controlled through **SCADA Software** with Touch Screen Monitor.
- Processes Done :
 1. Quenching & Tempering in Oil, Polymer and Water.
 2. ISO Thermal Annealing.
 3. Normalizing.

CNC TURNING CENTERS

DOOSAN MAKE

PUMA 400 - 2 NOS.

PUMA 280 - 2 NOS.

PUMA 240 - 3 NOS.

PUMA LYNX 220 LC - 2 NOS.

PUMA LYNX 220 - 1 NOS.

DIMENSIONAL RANGE FEASIBLE :

MAXIMUM DIAMETER : 500 MM.

MAXIMUM LENGTH : 1000 MM.



VERTICAL MILLING CENTERS

DIMENSIONAL RANGE

FEASIBLE:

X AXIS : 900 MM

Y AXIS : 500 MM

Z AXIS : 550 MM

MAKINO S56



DOOSAN DNM 400 - 2 NOS.



STEERING ARM MACHINING LINE

**Dedicated Machines and
Manpower for Manufacturing**

STEERING ARMS

Monthly Capacity : 2000 Sets



STUB AXLE MACHINING LINE

**Dedicated Machines and
Manpower for Manufacturing**

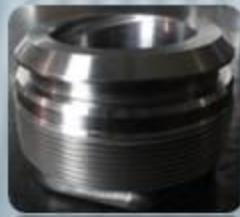
STUB AXLES

Monthly Capacity : 2000 Sets



JCB CELL FOR HYDRAULIC COMPONENTS

**Dedicated Machines and
Manpower for
Manufacturing Hydraulic
Parts for JCB.**



CRANKSHAFT MACHINING LINE

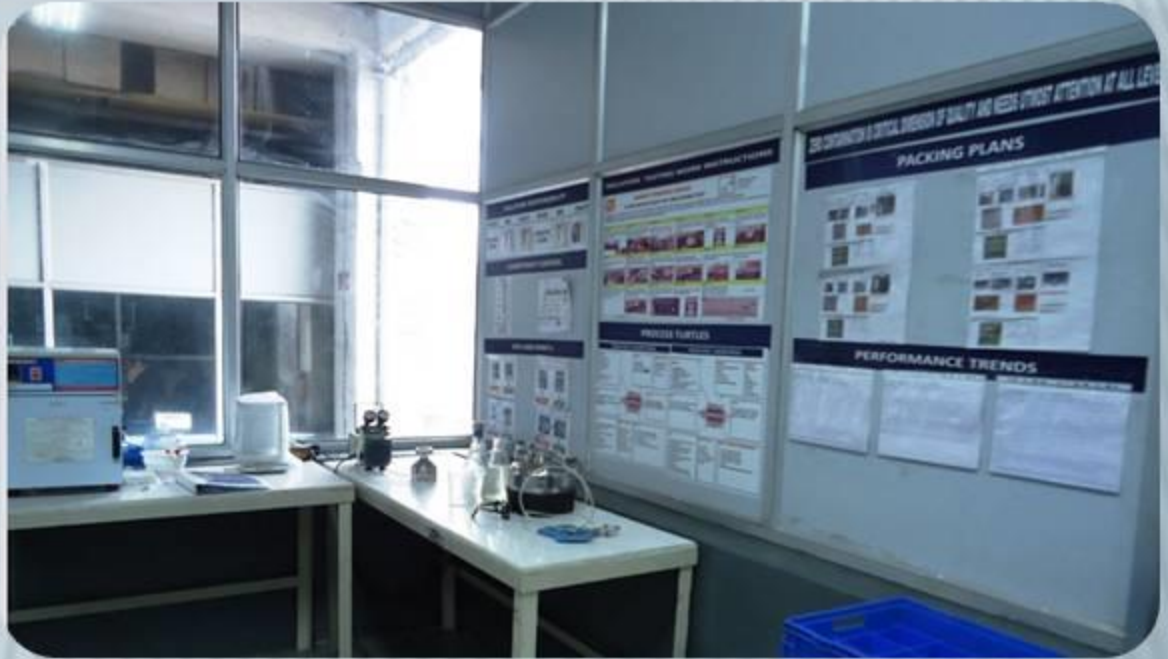
The infrastructure of the company, is well equipped with machinery and technologies required in production process.

- **INDUCTION HARDENING MACHINE**
- **JOURNAL GRINDERS**
- **ANGULAR WHEEL HEAD GRINDERS**
- **PIN GRINDERS**
- **CYLINDRICAL GRINDERS**
- **OIL HOLE DRILLING MACHINE(SPM)**
- **FLANGE HOLE DRILLING MACHINE**
- **RADIAL DRILLING MACHINES**
- **TEMPERING FURNACE**
- **CENTER FACING MACHINE**
- **SUPER FINISHING MACHINE(SPM)**
- **BALANCING MACHINE**
- **KEYWAY MILLING MACHINE**
- **MAGNA FLUX MACHINE**



Crank Shafts Up to 1 Meter Length, Fully Finish & Ready To Assemble.

WASHING & MILLIPORE FACILITIES



•SEMI AUTOMATIC WASHING MACHINE FOR WASHING MACHINED COMPONENTS.

•FULLY EQUIPPED MILLIPORE TESTING LAB WITH MICROSCOPE TO CHECK THE PARTICLE SIZE.



INSPECTION FACILITIES



- **CO-ORDINATE MEASURING MACHINE
CARL ZEISS CONTURA G2 RDS & AKIV**

- **TESA 2D HEIGHT MASTER**

- **CONTOUR TRACER CARLZEISS
MODEL-CONTOURECORD 1600G-14**



PRODUCT RANGE (FARM EQUIPMENT)

STEERING SYSTEM

STEERING ARMS



STUB AXLES



TRANSMISSION SYSTEM

GEARS



SHAFTS



ENGINE PARTS

CRANK SHAFTS



CAM SHAFTS



PRODUCT RANGE (AUTOMOTIVE)

AXLE HUBS



OUTPUT FLANGES



SPROCKETS



SHACKLE



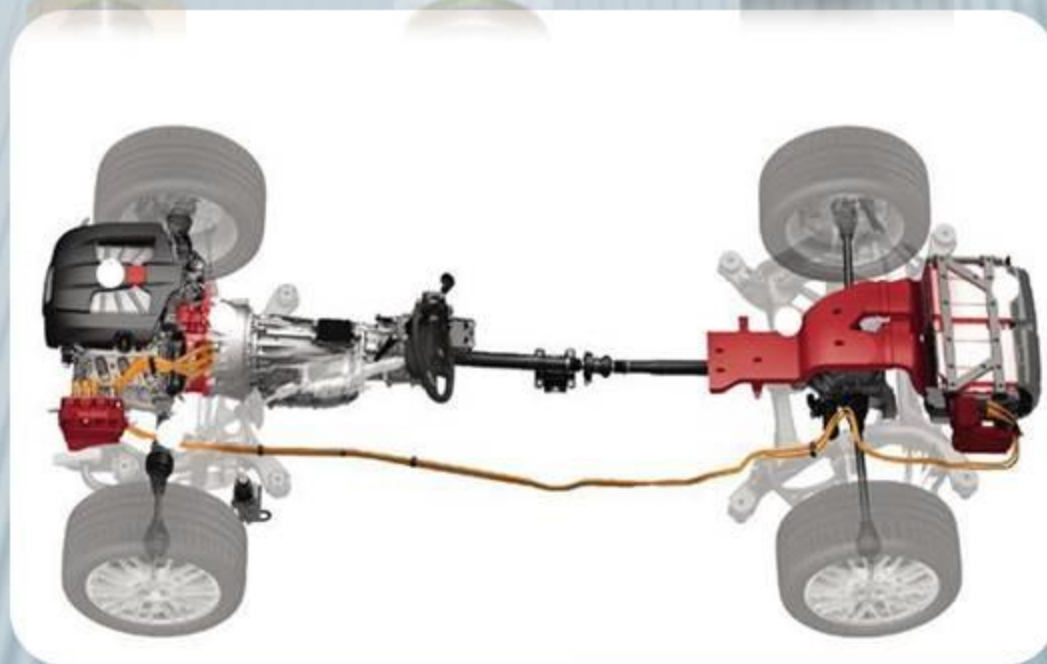
STEERING SYSTEM



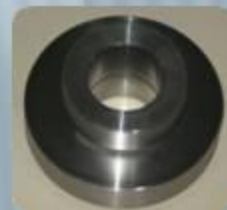
TOW HOOK



REFLEX ARMS



ENGINE PARTS



PRODUCT RANGE (EARTH MOVING & CONSTRUCTION EQUIPMENT)

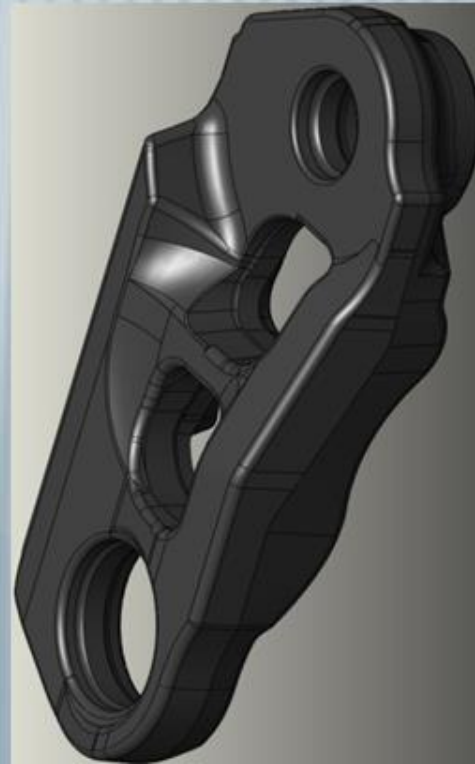
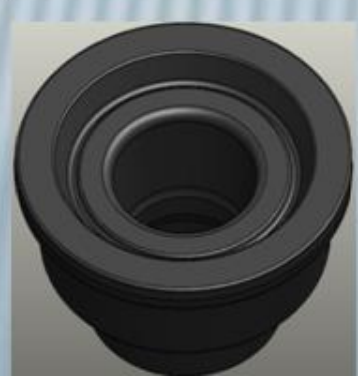
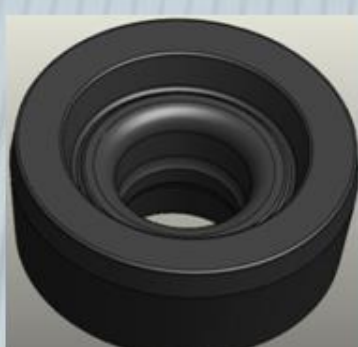


HYDRAULIC SYSTEM & BACKHOE LOADER PARTS

EXCAVATOR BOOM & DRIVE SYSTEM PARTS



PRODUCT RANGE (EARTH MOVING & CONSTRUCTION EQUIPMENT)



PRODUCT RANGE (OIL & ENERGY)



DRILL BITS



**BLOWER
SHAFTS**

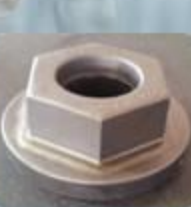
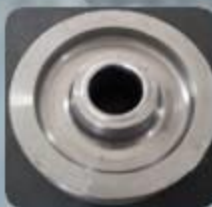


PRODUCT RANGE (RAILWAYS)



LOCOMOTIVE ENGINE PARTS

BRAKING SYSTEM & COUPLER PARTS



EXCLUSIVE SYSTEMS AT SFL

- ❖ **Production Controlled by a Oracle based ERP software.**
- ❖ **Morning Market where Internal Rejections are seen and discussed by Production and Quality Personnel**
- ❖ **Task Force Meeting to Assess and Analyze Die Performance headed by Vice President.**
- ❖ **Availability of :**
 - ❖ **Services of IATF Approved TS16949 2nd & 3rd Party Auditor International Trainer**
 - ❖ **Gold Medalist Chief Metallurgist.**
 - ❖ **TWO Six Sigma Black Belt Professionals.**
 - ❖ **Eight Certified Lead Auditors in ISO9001:2008 and 2nd Party ISO/TS16949:2009**
 - ❖ **Level II ASNT RT ,UT, MPT, PT Engineer.**

QUALITY SYSTEMS IN PLACE

1. **ISO9001 : Since 2004**
2. **TS16949 : Unit I : Since 2006**
: Unit II: Since 2009
3. **AD2000 : Since 2007**



Plans for New Systems :-

1. **ISO14001:2004 Environmental Mgt System and OHSAS 18001:2007 Safety Mgt System .**
Target for Completion : 30 Sep 2015
2. **IRIS Certification is under Consideration stage**

AWARDS



AWARDS



**AWARDED
CERTIFICATE OF
EXCELLENCE IN
RECOGNITION OF
EXEMPLARY GROWTH
AMONG THE TOP 500
FASTEST GROWING
MID-SIZES COMPAINES
IN INDIA**



ISO/TS 16949:2009 CERTIFICATES

Certificate

Standard **ISO / TS 16949:2009**

(2nd edition, 2009-08-18)

Certificate Registr. No. 01 111 1329181/01

IATF Certificate No. 0164342

TÜV Rheinland Cert GmbH certifies:

Certificate Holder: **Samrat Forgings Limited**
Vill. & P.O - Gholli Majra,
Distt. - Mohali - 140506, Punjab, India

Scope: **Manufacture of Closed Die Forgings for Automotive Application**
- without product design and development -

An audit was performed, Report No. 1329181/01. Proof has been furnished that the requirements according to ISO /TS 16949:2009 are fulfilled.
The due date for future audits is 13-03 (dd.mm).

Validity: The certificate is valid from 2013-06-09 until 2016-06-08.

2013-06-09


TÜV Rheinland Cert GmbH
Am Grauen Stein - 51105 Köln
Deutschland



2-140-QMC 01003

Certificate

Standard **ISO / TS 16949:2009**

(2nd edition, 2009-08-18)

Certificate Registr. No. 01 111 1329181/02

IATF Certificate No. 0164341

TÜV Rheinland Cert GmbH certifies:

Certificate Holder: **Samrat Forgings Limited**
Vill. & P.O - Bhankarpur,
Distt. - Mohali - 140201, Punjab, India

with remote location responsible for Policy Making, Sales,
Purchasing, Process Engineering, Information Technology
and Human Resources

Samrat Forgings Limited
Vill. & P.O - Gholli Majra,
Distt. - Mohali - 140506, Punjab, India

Scope: **Manufacture of Machined Components used for Transmissions,**
Hydraulics, Engines, Steering and Suspension Assemblies for
Automotive Application
- without product design and development -

An audit was performed, Report No. 1329181/02. Proof has been furnished that the requirements according to ISO /TS 16949:2009 are fulfilled.
The due date for future audits is 14-03 (dd.mm).

Validity: The certificate is valid from 2013-06-09 until 2016-06-08.

2013-06-09


TÜV Rheinland Cert GmbH
Am Grauen Stein - 51105 Köln
Deutschland



2-140-QMC 01003

CONTACT DETAILS

SAMRAT FORGINGS LIMITED

Works : Vill. & P.O. Gholu Majra – 140 506

Distt. Mohali, Punjab (India)

Tel. : (P.B.X.) : +91-1762-655733

Samrat Forgings Limited Unit-II (Machining Division)

Works : Vill. & P.O. Bhankarpur – 140 506,

Dera Bassi, Distt. Mohali, Punjab (India)

Tel. : (P.B.X.) : +91-1762-655733

Regd. Office & Mailing address :

#406, (First Floor) Sector-15A,

Chandigarh – 160 015 INDIA

Tel. : +91-172-2774555

Contact Person:

Mr. Rakesh M. Kumar

E-mail : info@samratforgings.com

(M) : +91-9814414444

Web: www.samratforgings.com



Forging Division



Machining Division

THANK YOU VERY MUCH FOR YOUR ATTENTION!

